

NHSmail *Roadmap for digital collaboration services across health and social care*

Live on the NHSmail Service



[Secure Email \(DCB1596\)](#)

Managing the accreditation process for the DCB1596 secure email standard and supporting organisations to accredit



[PSTN Dial-In Conferencing](#)

Dial-in option for Teams Meetings to allow attendees to call into the meeting from a mobile or landline



[NHSmail Admin Portal](#)

The Administration Portal allows NHSmail organisations to administer their users through an easy to use graphical interface



[O365 Privacy alerts/ safety net](#)

This service support organisations, content owners and Local Administrators with the necessary tooling for proactive management of content permissions.



[National Admin Service For Other Care Settings](#)

Provides an administrative service for PODS (Pharmacy, Optometry, Dentistry and Social Care) communities based in England



[Centre of Excellence](#)

The Centre of Excellence promotes user-centric design and development



[Password Synchronisation / Same Sign on](#)

Enables sync of password between NHSmail and local organisations Active Directory



[Data Protection Impact Assessment \(DPIA\)](#)

The DPIA demonstrates how NHSmail complies with data protection laws in England for users of the NHSmail Live Service across Health & Social Care



[Risky Login](#)

NHSmail service that identifies and blocks login attempts that pose a risk to NHSmail account security



[Clinical Safety](#)

The NHSmail service is approved for the exchange of clinical/sensitive data in line with the National Clinical Safety Case



[Local AD Integration](#)

Account synchronisation between local organisation Active Directory and NHSmail using Tansync capability



[Microsoft SharePoint team store, app store & add ins](#)

This service allows for organisations to submit requests for custom and third party SharePoint or Teams integrated applications for approval.



[Compromised Account Detection](#)

Service to monitor activity of user accounts on NHSmail allowing compromised accounts to be automatically detected



[PST Ingestion Service](#)

This service will complete a local onsite PST discovery and the importing of these identified files into users Online archive or primary mailbox.



[Mobile devices \(iOS, android, iPad OS\)](#)

Enables the deployment and Management of mobile devices within EMS



[Power BI New workspaces](#)

This service enables admins to use security groups to manage access to workspaces, enable BI teams to create workspaces without needing to create an O365 Group



[N365 Licensing](#)

To top up the E3R services, NHS organisations may purchase significantly discounted licences on Microsoft Enterprise Subscription Agreements known as N365



[Relay Service](#)

NHS Relay is the NHS Digital email gateway service offering inbound/outbound spam and antivirus scanning



[Calendar Federation](#)

Allows calendar sharing between NHSmail and non-NHSmail organisations (e.g. local government)



[Mobile Application Management \(MAM\)](#)

A solution to provide management of applications accessing NHSmail data from personally-owned bring your own (BYO) devices and MDM enrolled devices



[Windows 10 / HoloLens2 cloud only \(AAD join\)](#)

Allows enrolment of Windows 10 AAD joined devices & provides automated onboarding process to the EMS solution for Windows 10/11 and HoloLens 2 devices



[Power Platform](#)

Collection of Microsoft products that allow the automation of functions and services



[Address book Sync](#)

Allows contact syncing between NHSmail organisations an local non-NHSmail partners (e.g. local government)



[Virtual Visits](#)

Enables health and care staff to arrange virtual appointments with patients over MS Teams



[Multi Factor Authentication & FIDO2](#)

MFA & FIDO2 helps protect users by making it more difficult for someone else to sign in to their NHSmail account using two different forms of authentication



[All users security group](#)

This service allows security groups to manage access to SharePoint sites and applications as well as sharing Power Apps and Microsoft Teams



[Microsoft Defender for Endpoint](#)

This service offers preventative protection, post-breach detection, automated investigation and response to threats



[Single Sign On](#)

User authentication service that permits users to use one set of login credentials across NHSmail and their local infrastructure



[Onboarding & Offboarding Tooling Guidance](#)

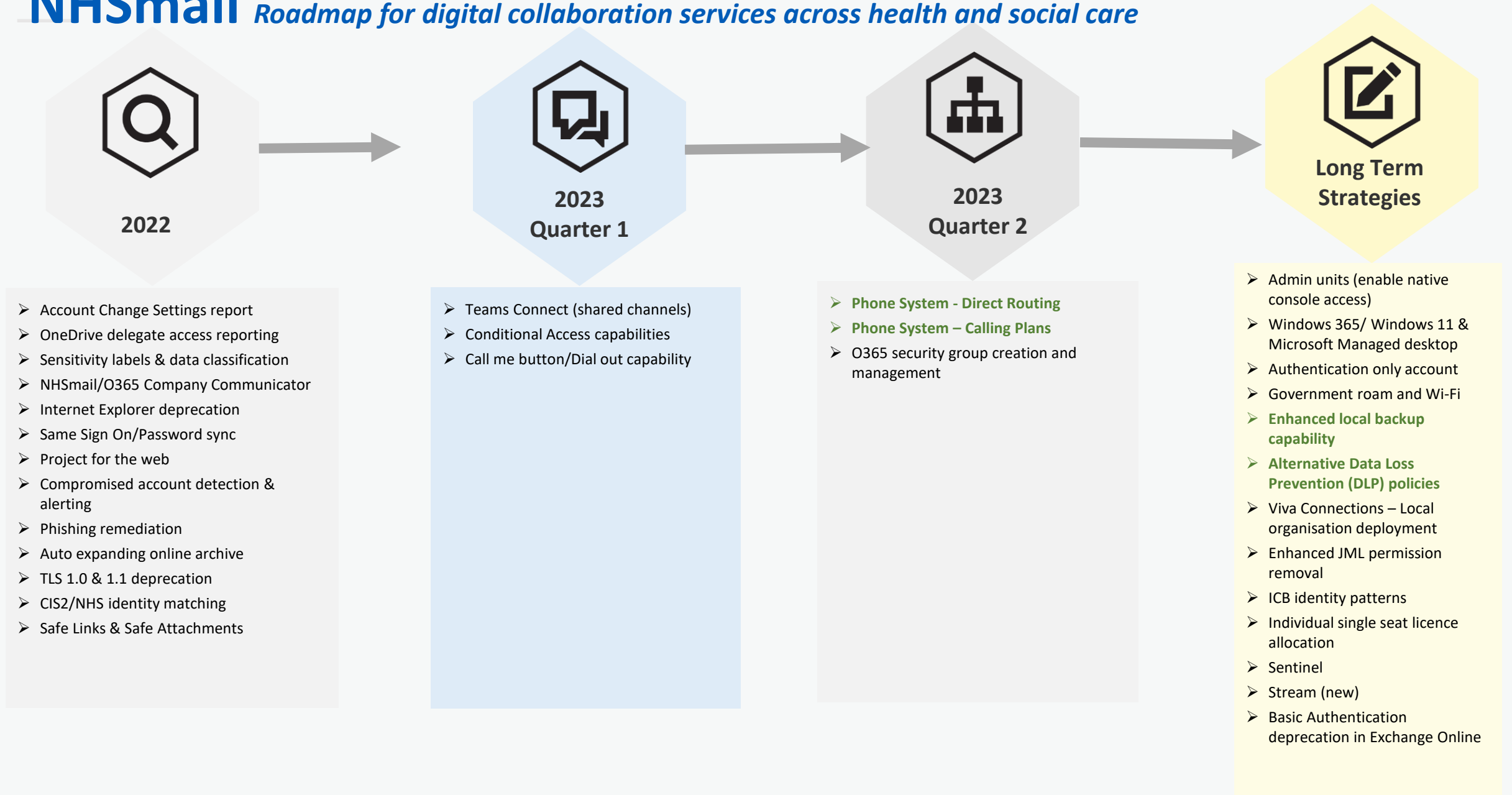
This service is to support organisations with the migration of local services to the NHSmail Shared tenant

Nationally available, locally funded

Nationally available, centrally funded

NHSmail

Roadmap for digital collaboration services across health and social care



Nationally available, centrally funded

Nationally available, locally funded

Intune Enhancements

• High Level Overview of significant items that have been implemented in the Central Tenant.

AVAILABLE NOW

PREVIOUS DELIVERY

Proposed candidates Q1-23

(tbc)



Samsung Knox



Multi-Org Management



Office Apps Packaging



APN Settings for IOS



MAM APP (App Protection Policies)



Company Portal Customisation



Group Policy Analytics



Security Baselines 2022 Update



Windows 11



RBAC roles for 1st Line IT support



ADE Modern Authentication



Windows 10/11 New Tracks



CIS / NSCS Baseline alignment for all platforms



Microsoft Defender for Endpoint



Microsoft Edge Baselines



Microsoft Defender Baselines



Read Only RBAC Role



¹ Google Zero Touch Deployments



Zebra Mobility Extensions



(New) Microsoft Business Store

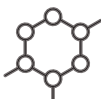


² Remote Help for Android

Q4-22 Delivered



Windows 365



² Advanced Management features



Microsoft Tunnel



USB Device Controls



Intune Enrolment notifications for users



Windows Feature Update reports



(enhance) Autopilot pre-provisioning additional Vendors

¹ Q1-23 feature release to Orgs subject to EMS team demand management assessment

² Feature release to Orgs subject to EMS team additional licensing clarification

Teams Phone System

Coming Soon – Starting Q2 (April) 2023

Microsoft Calling Plans (CP)

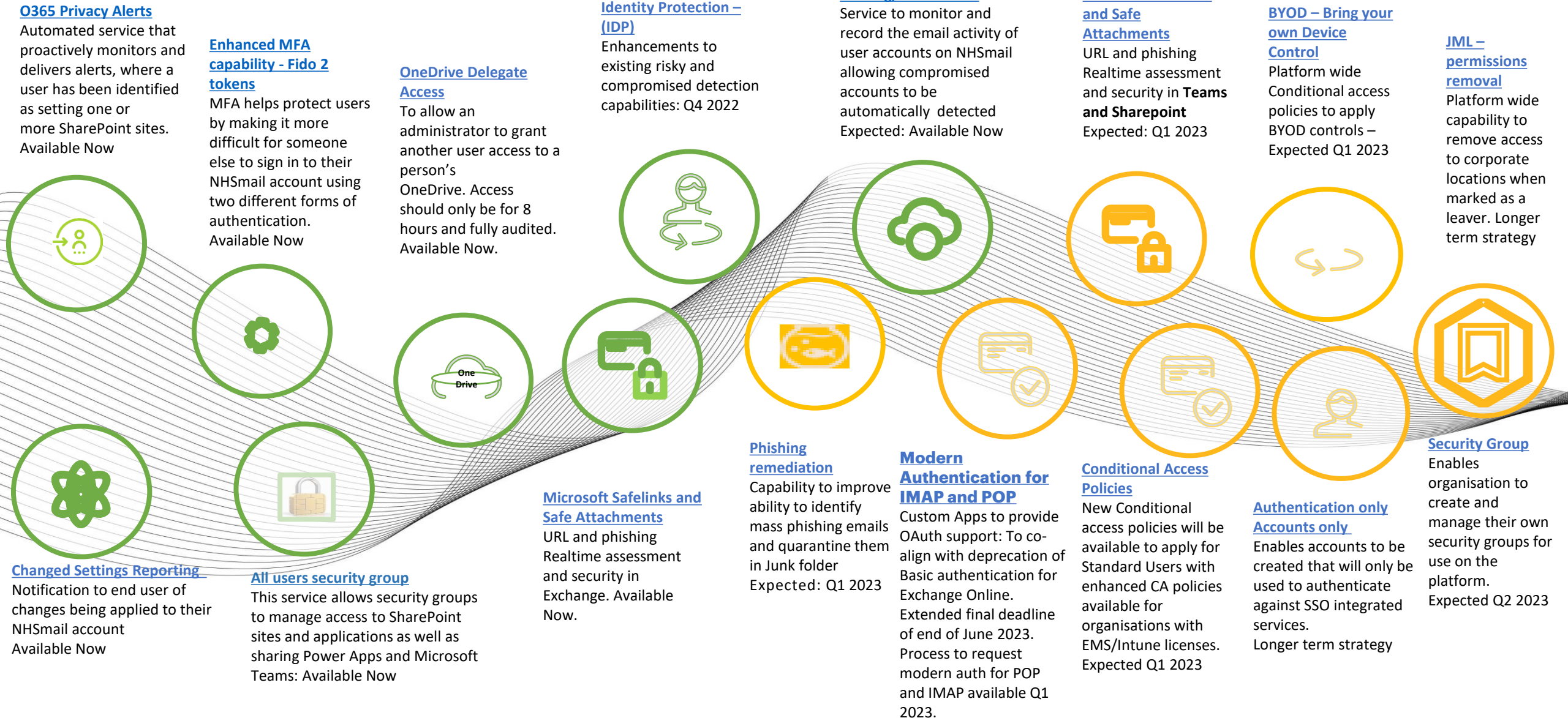
Microsoft's end-to-end all in the cloud voice solution that connects Microsoft phone system to the Public Switched Telephone Network (PSTN).

Direct Routing (DR) – Distributed SBCs

Locally managed SBCs (by NHS orgs) that will allow for integration with on-prem PBXs, so orgs can leverage existing infrastructure

In-Scope NHSmail phone system / automation features	Onboarding / Offboarding	Phone Number Management	Voice Calling Policies	Dial Plans	Caller ID	Auto Attendant	Cloud Call Queues	Usage Reporting
	<ul style="list-style-type: none">Onboard new orgs onto the tenant (setup and configuration)Offboard orgs from the tenant	<ul style="list-style-type: none">Purchase new numbers (Calling Plans)Porting numbersRelease numbersAssign/unassign numbers to users	<ul style="list-style-type: none">Global and custom policiesAssign/unassign voice calling policies to users	<ul style="list-style-type: none">Create a custom dial planAssign (custom) dial plan to users	<ul style="list-style-type: none">Global Caller ID policyCustom Caller ID policies can be created and editedAssign Caller ID policies to users	<ul style="list-style-type: none">Configure and edit auto attendants as per organisation requirements	<ul style="list-style-type: none">Configure and edit call queues as per organisation requirements	<ul style="list-style-type: none">Org level reporting view of PSTN minutes usageCalling activity breakdown for Calling Plans/Direct Routing

Security Capability Roadmap



Identity Roadmap

Authorisation
User Portal Management
Administrative portal enabling organisations to manage their own users
Available Now

Governance
Portal Administration
Microsoft Advanced Threat Protection admin integrated into NHSmail Portal
Available Now

Federation Ecosystem
Active Directory Bi-directional Sync
Automated synchronisation of identities
Available Now

Federation Ecosystem
ESR Integration
Integration delivered to automate movement of staff between ESR, NHSmail and local Active Directory services
Available Now

Additional MFA Authentication
Authorisation capability using FiDO2 tokens and certificates
Available Now

CIS2 / NHS.net identity mapping
This is looking to enable a 1:1 mapping of a users NHS.net account with their CIS2 credentials. Available Now

Identity Protection – (IDP)
Enhancements to existing risky and compromised detection capabilities:
Expected: Available Now

Multi Factor Authorisation
Microsoft Azure MFA
Multi-factor authentication to secure NHSmail identities
Available Now

Federation Ecosystem
Third Party SSO
NHS Directory available to support SSO with third-party services supporting Open Authentication Standards
Available Now

Risky Login, and Risky Sign-in
Monitoring and alerting
Enabling the identification of anomalous logon events and blocking authentication, and Marking account as Compromised. Available Now

TANsync and TANsync JML
Enables sync of password between NHSmail and local organisations
Available Now

Password Synchronisation / Same Sign on
Enables sync of password between NHSmail and local organisations
Available Now

ICB Identity Patterns
Identity patterns for multi-ORG, Multi-tenant ICB scenario's
Expected Q1 2023

Deprecation Roadmap 2023/2024

Microsoft Office 2016 & 2019

Connection to M365 will no longer be supported after October 10, 2023. Office versions will still be able to connect but end users may experience performance or reliability issues.

Expected: 10 October 2023



Microsoft Office 2013

Office 2013 will reach the end of extended support on April 11, 2023.

Expected: 11 April 2023

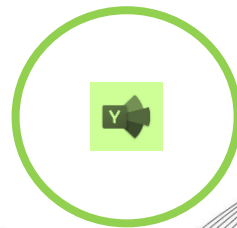
Microsoft Office Products

End of support for:
Office Professional 2013
Visio Professional 2013
Project Professional 2013
Expected Q2 2023

Yammer

Microsoft will soon be moving Yammer to Native mode from legacy version. In Native Mode, all Yammer users are in Azure AD, all groups are Microsoft 365 groups, and all files are stored in SharePoint Online

Expected: TBC



Windows Microsoft Monitoring Agent (MMA)

Azure will no longer accept connections from older versions of the Windows Log Analytics agent, also known as MMA that uses an older method for certificate handling. The affected versions are Windows 7 SP1, Windows 8.1, Windows Server 2008 R2 and Windows Server 2012 R2/2016. The new minimum supported MMA version is 10.20.18053.0

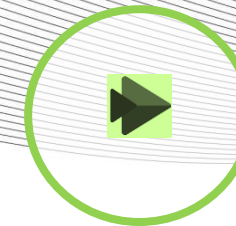
Expected: February 2023

Basic Auth in Exchange Online

Microsoft will start to turn off Basic Auth for the following protocols:

POP,IMAP,EWS,MAPI,RPC,OA,EAS, RPS (Remote PowerShell)

Extended to June 2023



Stream

Microsoft will be retiring Stream (Classic) and moving to Stream (on SharePoint).

Expected: February 2024