

NHSmail Intune Service

Session 9: Windows 10 Hybrid Infrastructure Overview

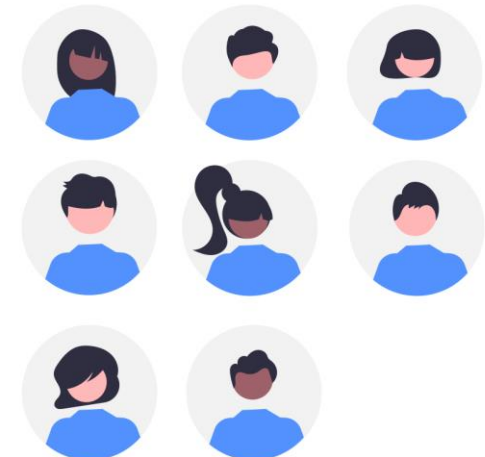
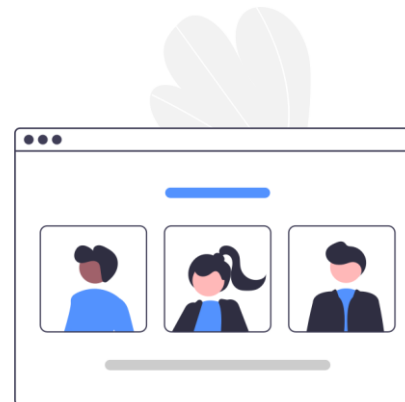
28th April 2022



Upskilling Series | Housekeeping

Event name:	Session 9: Windows 10 Hybrid Infrastructure Overview
Date:	28 April 2022
Location:	Online Webinar
Start / end time:	13:30 – 14:00
Attendees:	NHSmali Intune Team and LAs from March onboarding organisations
Objectives & purpose:	To provide an overview of the upcoming hybrid features for Windows 10 (and later) devices and outline the prerequisites organisations will need to fulfil.
End goal:	March organisations understand more about the hybrid features and are able to register their organisation's interest

Housekeeping
<ul style="list-style-type: none">• As this is a webinar, all attendees, other than the presenters will be on mute during the event.• There will be a question and answer section at the end of the session, time permitting. If you wish to ask a question during this section, please raise your hand. Alternatively, please use the chat functionality.• Any questions submitted in the chat which we don't have time to answer or are unable to answer in the session or are unable to answer will be answered via follow-up email after the session where appropriate.

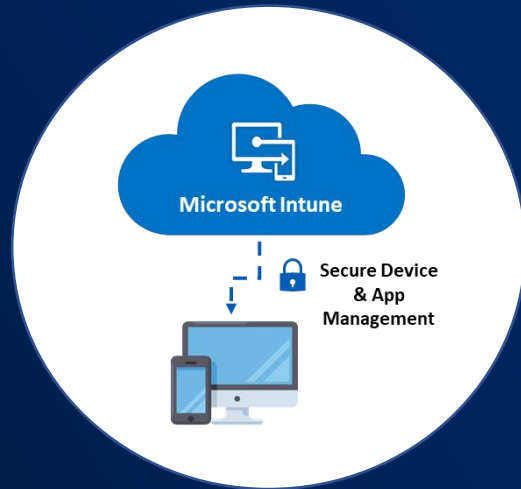


Agenda

Session 9: Windows 10 Hybrid
Infrastructure Overview

- 01** Overview and Objectives
- 02** Introduction to Hybrid
- 03** Infrastructure
- 04** Prerequisites
- 05** Same Sign On
- 06** TanSync
- 07** Registering Interest
- 08** Questions and Close

Session 9



Windows 10 Hybrid Infrastructure

Overview & Objectives



Overview

- As a result of organisations having the opportunity to purchase EMS E3 and AADP2 licenses, **Intune for Mobile Device Management (MDM) capabilities** have been enabled, in a way that supports the shared NHSmail tenant multi-organisation model.
- The NHSmail Intune Service is a **supported live service** with the onboarding of organisations proceeding in a **phased manner**.
- The **upskilling** of Intune will be available to onboarding organisations in a series of **optional training sessions** over a 4-week period.
- **Session 9** will focus on providing an overview of the hybrid infrastructure, including feature options, outline key prerequisites organisations will need to fulfil and to explain how organisations onboarded in March can express their interest.



Objectives

- Provide an overview of the hybrid infrastructure features for Windows 10 (and later) devices.
- Outline **key prerequisites** which will need to be met by organisations in order to enrol and manage 'hybrid' devices.
- Explain how organisations **can express their interest**.
- Answer any technical or logistical questions related to the hybrid features.

Hybrid Overview | Introduction to Hybrid

NHSmile Intune will soon allow Windows 10 (and later) devices to be enrolled onto the platform as Azure Hybrid-joined devices as well as Azure AD-joined devices

As part of the work to add improved functionality to the NHSmile Intune Service, the testing of a 'Windows 10 Hybrid Infrastructure' solution is underway. This solution is designed to accelerate cloud adoption.

Why Hybrid?

1. In order for organisations to achieve a full, Cloud-Only Device immediately, some organisations may find the effort and transformation prohibitive.
2. The NHSmile EMS Windows 10 'Hybrid Infrastructure' solution is designed to accelerate cloud adoption by providing an interim solution.
3. Organisations can more widely deploy and adopt Cloud benefits in NHSmile by:
 1. Adopting a 'Cloud-only' device identity (**AAD-joined**)
 2. Adopting an interim 'Hybrid-joined' device identity (**Hybrid-AAD-Joined**)

Benefits & Limitations

- ✓ Device identity managed in nhs.net Azure AD
- ✓ Augmented access to resources in the organisation's on-premises Active Directory
- ✓ Microsoft Intune & Co-management with SCCM
- ✓ Org AD Users / (Hybrid-joined) Devices synchronised to **NHS.net AAD**
- ✓ Windows Autopilot builds for AAD-joined devices
- ✗ Org AD User & Device **Groups** not synced to AAD

What's available for organisations?

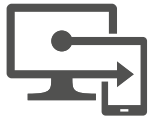
1. Option to progress with an AAD-joined device with Cloud adoption simultaneously
2. A Kick-off assessment will identify the main track opted for and align support accordingly.



Hybrid Overview | Technical Benefits

By adopting Hybrid Windows 10 devices, orgs. can accelerate the adoption of key **secure NHSmail cloud services** to reduce IT effort and enhance user experience

Intune



Intune Cloud Management

Deploy and manage AAD-Joined devices with Autopilot and Intune.

Hybrid-joined device management can be migrated from On-premises SCCM to cloud via 'Co-management' workloads.

Conditional Access



Enhanced Device Compliance

Provides a pathway to applying conditional access to users' devices to access key NHS resources:

- Require Device Compliance
- Require approved apps

Cloud and On-Premises access



Single-Sign-on to resources

Enhanced access to Cloud and existing on-premises resources for AAD-Joined devices such as printing, existing apps, Active Directory and more.

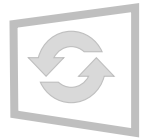
Defender for Endpoint (ATP)



On-board cloud-based security

Leverage Microsoft Defender for endpoint with Intune to keep devices secure. Migrate & Retire existing AV and threat protection solutions.

Windows Updates



Enhanced Windows updates & Features

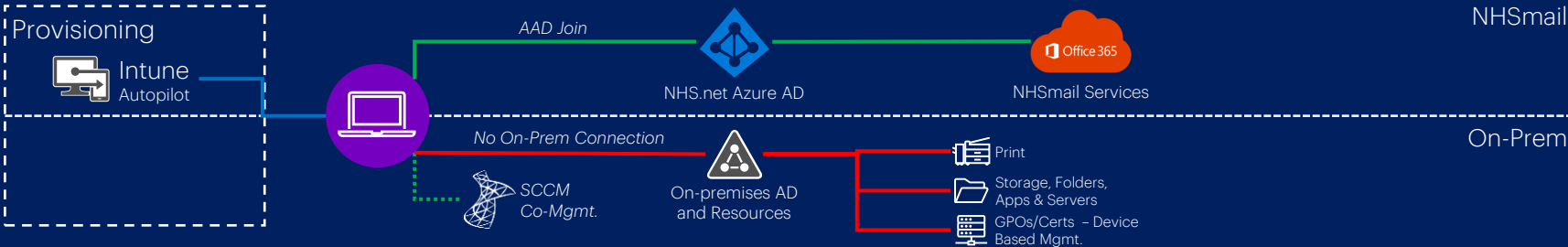
Automate and centralise Windows 10 & 11 updates and features with Intune-based 'Deployment Rings' and an evergreen approach.

Preview Hybrid Infrastructure | Hybrid Tracks

Cloud Only Device



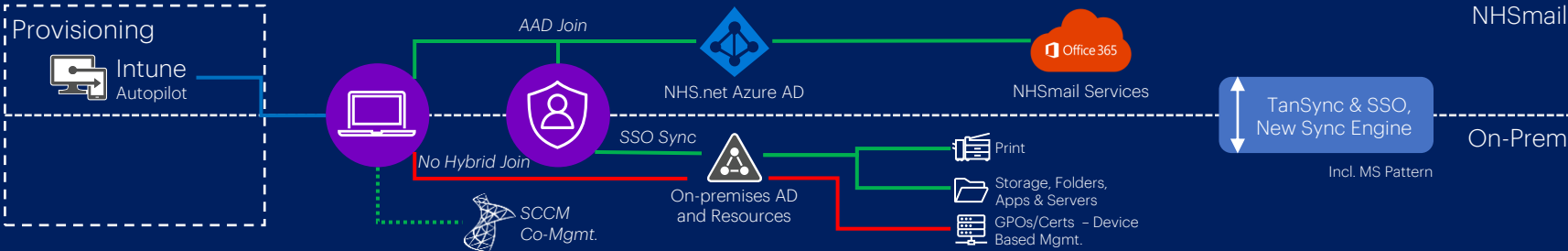
Available Now



Enhanced Cloud Device (AADJ+SSO)



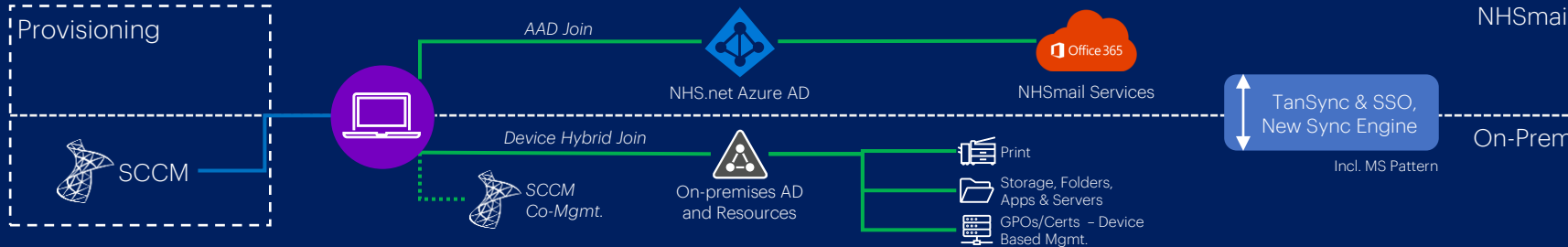
In Release Planning (Q2 2022)



Hybrid Joined Device



In Release Planning (Q2 2022)



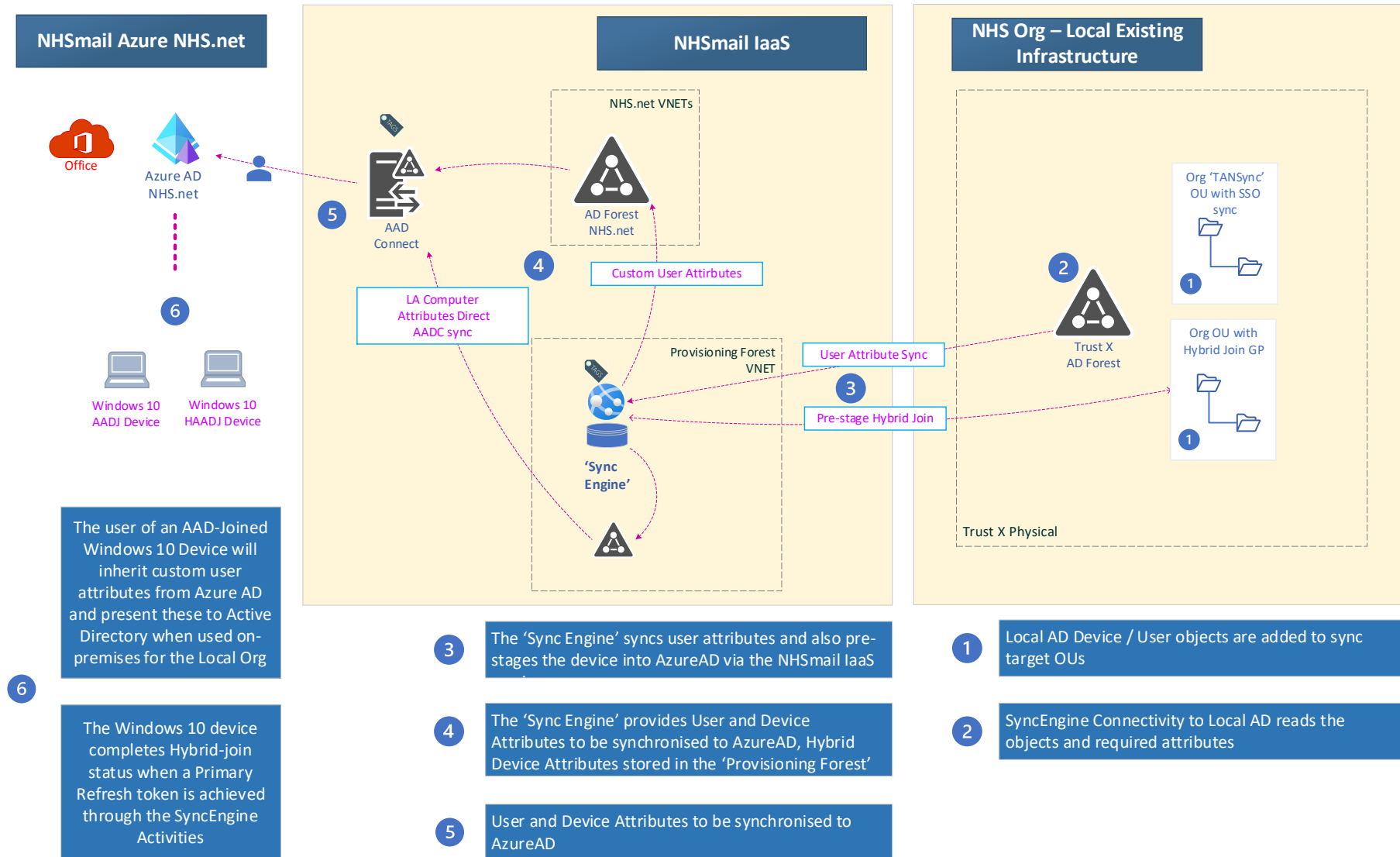
Dotted Line
Indicates Optional

Connectivity

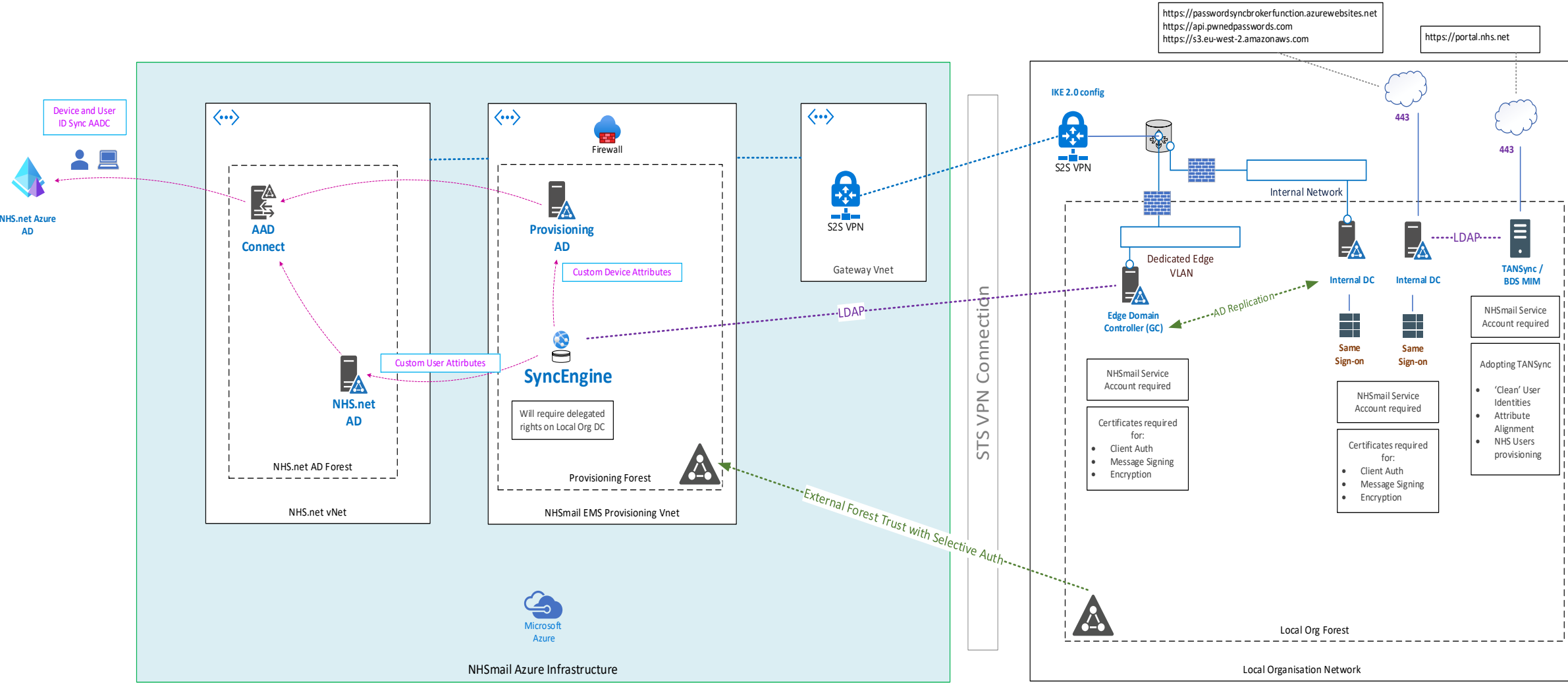
Provisioning

No Connectivity

Hybrid Overview | Solution Schematic



Hybrid Overview | Local Network Connectivity



Hybrid Overview | Prerequisites

Below is a high-level overview of the prerequisites required to be met before an organisation can begin using the Hybrid solution



Please note: It is **not** recommended that organisations begin these activities now. The above is intended to provide information to organisations on the type and scale of prerequisites which will need to be completed once the hybrid-join feature is available.

Hybrid Overview | Same Sign On

An outline of the Same Sign On prerequisites required before an organisation can begin adopting the Hybrid solution

Overview

Currently, the majority of NHS organisations operate Local Directories which are typically standalone and do not link with any of the directories within the NHS. This means that users must manage two separate passwords, one for NHSmail to access their mailbox, and one for their local AD to log into their workstation.

This causes a **high volume of password reset tickets** to organisations' local service desks.

The NHSmail Same Sign On (SSO) solution enables **bi-directional synchronisation of passwords** between NHSmail and organisations' local active directories.

Key Benefits



- ✓ Reduce overhead on password management for users



- ✓ Reduce overhead on the service desk to support password reset



- ✓ Unified Password Policy across the two services

Hybrid Overview | TANSync

An outline of the Identity Sync prerequisites required before an organisation can begin using the Hybrid solution

Overview

TANSync is a customised Identity Management Solution which synchronises user objects between NHSmail and local Active Directory (AD) using Microsoft Identity Manager.

No Microsoft licenses are required and there are therefore no ongoing licenses costs.

Key Benefits



- ✓ Exchanging contacts to and from your Local AD



- ✓ Creating accounts in NHSmail – with Local AD being authoritative



- ✓ Creating users in Local AD – with NHSmail being authoritative

Note: Organisations can alternatively adopt the equivalent 'BDS' or custom Identity sync solution as an alternative to TANSync

THANK YOU